



Gaea Global Technologies
Oracle Primavera and Value Chain Experts

Larsen & Toubro a technology, engineering, construction and manufacturing company. It is one of the largest and most respected companies in India's private sector. Rolled out for the Railway Business Unit - which caters to railways infrastructure, rolling stock plants and rail transit projects for public and private sector rail organizations in India.

Industry

E&C

Annual Revenue

US \$9.98 billion

Employees

38,785

ORACLE PRODUCTS & SERVICES

ORACLE® Primavera P6
ORACLE® Primavera Contact Management

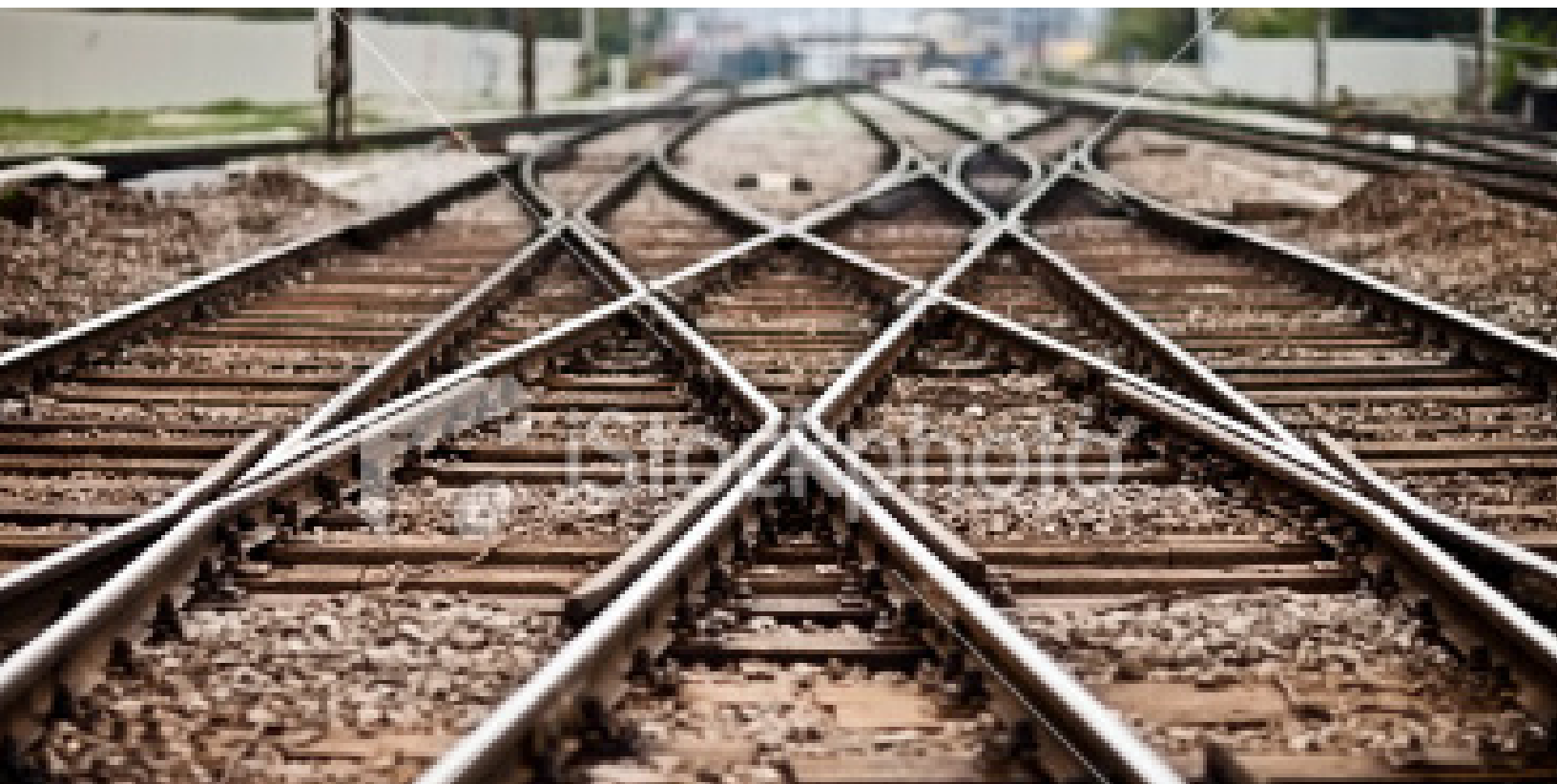
GAEA PRODUCTS & SERVICES

Terra6
Inspire Add-On for Oracle Primavera
End-to-End Implementation Services

PROJECT TIMELINE

Implementation Type
Multi-wave implementation
Implementation End Date
11-02-2010

Implementation Start Date
11-27-2009
Current Status
On-going Support





Gaea Global Technologies

Oracle Primavera and Value Chain Experts



More Information

sales@gaeaglobal.com

Challenges

- To have a holistic view across all projects in their enterprise .
- A single source of project information from project initiation to project closure.
- Improve their project team collaboration.
- Status of high-value materials and items not visible in conjunction with the project plan.

Solution

- Implemented P6V7 web access & Primavera Contract Manager.
- Integrated their Microsoft SharePoint document repository to P6 & CM to have a collaborative document management platform.
- Project initiation work flow for their Pre- bid process to store all communications / documents even if the project does not take off.
- Material tracking workflow on CM & P6 Web & created a quick view for the project users to identify each Bill of Quantity item status.
- All their master schedules & also their vendor schedules linked, for single point schedule update.
- Material Inspection Summary in Primavera Contract Manager.
- Dashboards provided a holistic view of all their project performance.

Benefits

- Primavera implementation is now extended to all other Business units.
- Successful in transforming their Project management process from 'Planner Centric' to 'User centric'.
- Minimized usage of Excel Reporting & Primavera was the only source of truth for project data.
- Executive Dashboards facilitated better decision making and faster turnaround in issue resolution.
- Thresholds, Issue & feedback and the user based layout brought the project participants closer, resulted in increasing the team collaboration.

CORPORATE HEADQUARTERS

1900 South Norfolk Street, Suite 350,
San Mateo, CA 94403, USA

Tel : +1 (650) 320-7623

Fax: +1 (928) 833-9075

INDIA DELIVERY CENTRE

57/2, R.H.Road, YMIA Commercial
Complex, II Floor, Mylapore,
Chennai 600 004 India

Tel : +91 (44) 6457-4232